



Areas of Application

Prevents access to the main cylinder valve. Handy and easy to use – no need to match the lockout device to varying diameters and threads of cylinder caps. Installs in seconds to save time.

Details

- High-quality polypropylene: long-lasting, robust and non-conductive
- Warning sticker included
- Holds 1 padlock with up to 23/64" / 9 mm shackle diameter

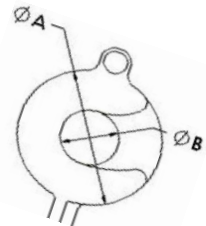
Material

- Body and flanks: Polypropylene
- Rivet: Stainless steel

Dimensions

Item	Width:	Length:	Depth (A):	Inner height:	Inner diameter:
P606	159 mm	132 mm	88.1 mm	139 mm	78 mm

Diameter of passage (\varnothing B): 36 mm



Temperature Range

- Polypropylene: -20° to 80°C (0° to 175°F)

Chemical Resistance

All approved chemicals listed are based on the manufacturer's specified chemical resistance chart for plastic material only. The results were determined at a room temperature of +20°C/+68°F. All data are subject to environmental variables and product features.

Chemical	Grade
Mineral lubricants	Conditionally resistant
Aliphatic hydrocarbons	Conditionally resistant
Aromatic hydrocarbons	Conditionally resistant
Gasoline	Conditionally resistant
Weak mineral acids	Resistant
Strong mineral acids	Conditionally resistant
Weak organic acids	Conditionally resistant
Strong organic acids	Conditionally resistant
Oxidizing acids	Conditionally resistant
Weak bases	Resistant
Strong bases	Resistant
Trichloroethylene	Conditionally resistant
Perchloroethylene	Conditionally resistant
Acetone	Resistant
Alcohols	Resistant
Hot water (hydrolysis resistance)	Resistant
UV light and weather	Conditionally resistant

Legal Note

ABUS products are sold with the understanding that the buyers will test them in actual use and determine for themselves their adaptability to their intended uses.